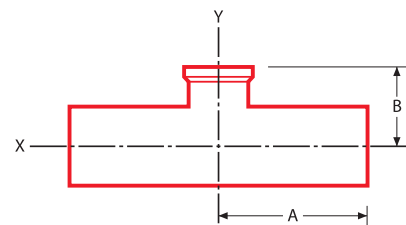


DT 14

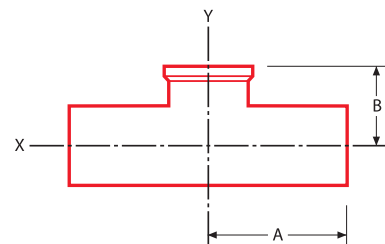
Automatic Tube Weld:
Short Outlet Hygienic Clamp Joint
Reducing Tee



Nominal Size		Order Code		A		B	
inch	mm	SFF1	SFF4	inch	mm	inch	mm
6 x 1/2	152,40 x 12,70	14 k-c1	14 k-c4	5.625	142,90	3.625	92,10
x 3/4	x 19,05	14 k-d1	14 k-d4	5.625	142,90	3.625	92,10
x 1	x 25,40	14 k-e1	14 k-e4	5.625	142,90	3.625	92,10
x 1 1/2	x 38,10	14 k-f1	14 k-f4	5.625	142,90	3.625	92,10
x 2	x 50,80	14 k-g1	14 k-g4	5.625	142,90	3.625	92,10
x 2 1/2	x 63,50	14 k-h1	14 k-h4	5.625	142,90	3.625	92,10
x 3	x 76,20	14 k-i1	14 k-i4	5.625	142,90	3.625	92,10
x 4	x 101,60	14 k-j1	14 k-j4	5.625	142,90	3.750	95,30

DT 15

Automatic Tube Weld:
Short Outlet Hygienic Clamp Joint
Tee



Nominal Size		Order Code		A		B	
inch	mm	SFF1	SFF4	inch	mm	inch	mm
1/4	6,35	15a1	15a4	1.750	44,50	1.000	25,40
3/8	9,53	15b1	15b4	1.750	44,50	1.000	25,40
1/2	12,70	15c1	15c4	1.875	47,60	1.000	25,40
3/4	19,05	15d1	15d4	2.000	50,80	1.125	28,60
1	25,40	15e1	15e4	2.125	54,00	1.125	28,60
1 1/2	38,10	15 f1	15 f4	2.375	60,30	1.375	34,90
2	50,80	15g1	15g4	2.875	73,00	1.625	41,30
2 1/2	63,50	15h1	15h4	3.125	79,40	1.875	47,60
3	76,20	15 i1	15 i4	3.375	85,70	2.125	54,00
4	101,60	15 j1	15 j4	4.125	104,80	2.750	69,90
6	152,40	15k1	15k4	5.625	142,90	4.625	117,50